

HG-7200

Hypermedia's SMS Corporate product application simplifies communication between employees, colleagues and customers; ensuring timely messages between individuals and groups.

An enhanced desktop web-based Person-to-Person / Person-to-Group communication tool, the SMS Corporate HG-7200 has been developed over the SMS Gateway Pro API interfaces for enterprise usage.

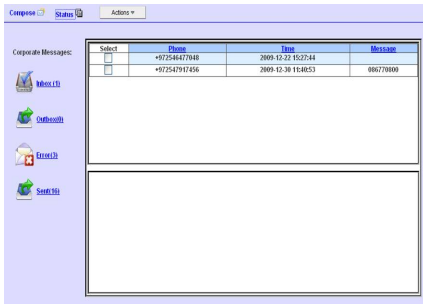
SMS Corporate Highlights Include:

- Two-way communication
- SMS-to-Email / Email-to-SMS
- Address book
- CSV import/export
- Personal signature
- Inbox-like user interface
- and More

Major Advantages:

The new Hypermedia SMS Corporate is an on-site CPE SMS product application that has been developed over the Hypermedia SMS Pro Gateway API interface. It utilizes the SMS Pro Gateway technology as an alternative instant tool for communicating with a variety of end-users, such as: customers, clients and employees.

Key Benefits for Corporate Business:



SMS Corporate enables to create and send instant SMS messages to a single person or a group of people, featuring advanced management capabilities and intuitive user interface.

The scalable, web-based, SMS Corporate HG-7200 supports from 4 to 72 SMS-GSM/CDMA ports on a single application, providing full contact and inbox-like mechanism and an import CSV module.

Hypermedia SMS Corporate Main Product Functionalities:

Module

Description

User Interface

- Enhanced, flexible and intuitive product web-based User Interface

Reports & Monitoring

- For sent and received messages
- Includes status of sent messages (failed, pending, delivered, etc.)

Compose

- Create and send single and multi-SMS
- Compose and send instantly to a single number or group
- Supports CSV file and MySQL database

Acknowledgment

- Failed Acknowledgment
- Pending Acknowledgment
- Sent Acknowledgment

Contact Management

- Add contacts manually one by one
- Add contacts by import

Subscription Module

- Send auto-response back
- Export all the subscribers to a CSV format
- Send a message to a group in one click

Campaign Management

- LCR and White / Black list support
- Set threshold for credit balance
- Send alerts to multiple administrators
- Auto-forwarding support for incoming messages (forwarded to an Email*)